



BIENNIAL REPORT

ARKANSAS DEPARTMENT OF LABOR & LICENSING

ARKANSAS WORKERS' COMPENSATION COMMISSION DIVISION



Biennium
2018-2019
2019-2020



ARKANSAS
WORKERS' COMPENSATION
COMMISSION
BIENNIAL REPORT
FOR THE FISCAL YEARS
2019 & 2020

ASA HUTCHINSON, GOVERNOR

DARYL BASSETT, SECRETARY

Scotty Dale Douthit, Chairman
Christopher Palmer, Commissioner
Scott Willhite, Commissioner

David Greenbaum, CEO

Table of Contents

Mission..... i

Introduction..... ii

Organizational Chart..... 1

Divisions..... 2

Summary..... 6

Tables..... 7

MISSION

The Mission of the Arkansas Workers' Compensation Commission is to administer and enforce Arkansas Workers' Compensation Law as authorized by the Constitution and as enacted by the Legislature.

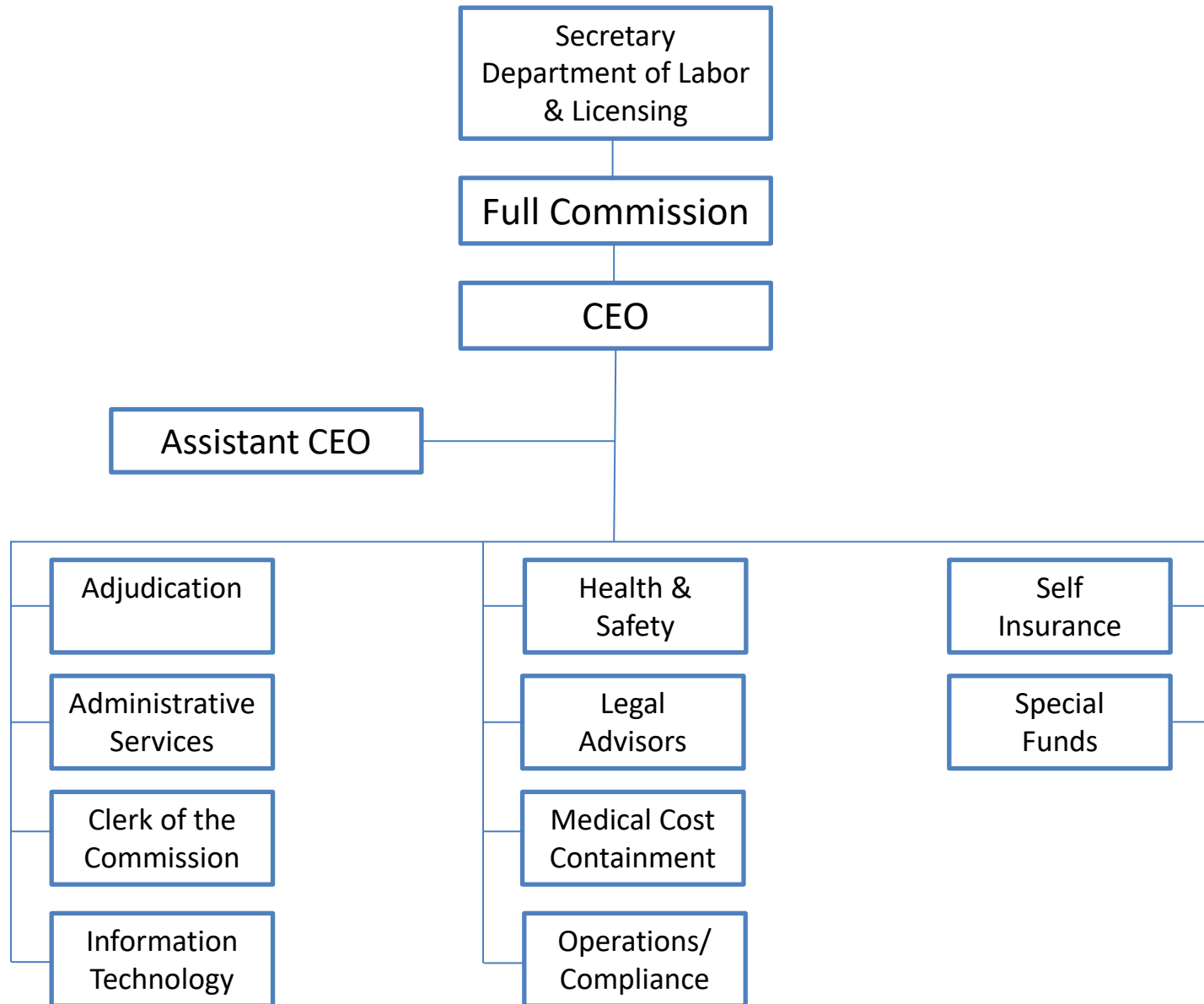
INTRODUCTION

The Arkansas Workers' Compensation Commission (AWCC) and the law it administers was effective December 5, 1940. It is not an insurance company; it enforces the workers' compensation laws to ensure that all covered employers secure coverage from commercial carriers or through self-insurance programs. Additionally, the Commission monitors workers' compensation awards to ensure benefit providers make timely payments to eligible claimants. Workers' compensation insurance is directed to the moral, social, and economic benefits of protecting employers, employees, and their dependents from financial burdens imposed by job-related injury and disease.

The extent of disability and the fairness of total compensation can be an item of dispute among the parties involved. Should any dispute arise among the parties involved, the Arkansas Workers' Compensation Commission, through its three Commissioners and a staff of Administrative Law Judges, may adjudicate these cases and impose binding decisions. These decisions can be appealed to the Arkansas Court of Appeals and the Arkansas Supreme Court.

Each Commissioner is appointed by the Governor for a term of six years. One represents the interests of labor, one represents management, and the Chairman acts as a neutral party, representing the interests of the public. The three Commissioners, ten Administrative Law Judges, and three Legal Advisors accomplish all judicial duties. Administrative functions are directed by the Chief Executive Officer.

ARKANSAS WORKERS' COMPENSATION COMMISSION ORGANIZATIONAL CHART



THE COMMISSION AND ITS DIVISIONS

The Commission

The three-member commission is responsible for the administration of the workers' compensation law in Arkansas. The Commissioners are appointed by the Governor for a term of six years. One of the Commissioners represents the interests of labor, another management, and the Chairman acts as a neutral party, representing the interests of the public.

Executive Office

The Chief Executive Officer and Assistant Chief Executive Officer oversee administrative and regulatory functions of the Arkansas Workers' Compensation Commission include monitoring all claims and benefit payments to injured workers, processing settlements, lump sum payments, and requests for changes of physicians; ensuring employers maintain required insurance coverage; approving applications of employers to act as self-insurers; and participating in programs to explain the functions of the Commission to the general public. The divisions assisting in carrying out these functions are: Adjudication, Administrative Services, Clerk of the Commission, Health and Safety, Information Technology, Legal Advisor, Medical Cost Containment, Operations and Compliance, Self-Insurance, and Special Funds. The Executive Office also coordinates the annual educational conference and ensures the annual and biennial reports are completed and distributed.

Adjudication

The Adjudication Division adjudicates all pending claims for temporary and permanent disability benefits to legitimately injured workers who suffer an injury or disease arising out of and in the course of their employment, together with reasonable and necessary medical expenses. In addition, the Adjudication Division enforces the provision of the Act requiring compliance by employers and order of fines and sanctions, as appropriate.

The Division currently has nine (10) Administrative Law Judges (ALJs), and eight (8) Administrative Assistants as support staff. Seven (7) ALJs have offices in Little Rock and three (3) are in Springdale.

Based upon the number of claims filed within each county, Arkansas is currently been divided into six (6) geographic districts. Administrative Law Judges travel throughout the state within an assigned district and conduct hearings when disputes arise between injured employees and their employers and/or insurance carriers. Cases are assigned according to the county in which the incident occurred. Pulaski County cases are assigned to all ALJs who have offices in Little Rock as a means of balancing the overall caseload.

Clerk of the Commission

The Clerk's office was established to serve as a conduit for filing, processing and internal routing of pleadings, legal documents and other notices received by the Workers' Compensation Commission. This office is responsible for the assignment of all cases to the Administrative Law Judges and Legal Advisors. In addition, the Clerk maintains the required dockets for cases appealed to the Full Commission, prepares the record/transcripts for lodging with the Court of Appeals, reviews the record on appealed cases, certifies record composition, and certifies copies of documents from the commission files requested in writing from interested parties.

Administrative Services

Fiscal Section:

The Commission's operations are funded from a premium tax (limited by law to three percent) on workers' compensation premiums paid by insurance companies writing workers' compensation policies, companies qualifying as self-insurers, and all public employers. The Fiscal Section of the Administrative Services Division disburses these funds. All purchasing, accounting, investments, travel, and budget analyses are the responsibility of this division.

Human Resources Section:

The Human Resources section of the Administrative Services Division is responsible for developing, implementing, and monitoring Commission human resource systems and policy, as well as payroll transactions. Job announcement, interviewing and selection of applicants, performance evaluation, leave accounting, quality management, training and the switchboard are administered by the division. In addition, human resources coordinates with the Office of Personnel Management, provides support to the Chief Executive Officer in the compilation and analysis of Commission personnel budget requests, and counsels with agency management and staff regarding the resolution of sensitive issues associated with performance, discipline, promotion, and selection or other related matters.

Administrative Services also, directs the functions of the mail room, security, and maintenance for the building.

Information Technology

The IT Division is responsible for the automation of the Commission. The backbone of the system is an in-house developed application that captures data from the inception of a claim and maintains and updates this data throughout the life of the claim. The Division currently maintains databases consisting of reported claims, employers, insurance carriers and adjusters, and various other supporting databases.

Health and Safety

Act 796 of 1993 created the Health and Safety Division that serves as a resource center on safety issues pertinent to employers and employees in Arkansas. Within the Division are the following sections: Accident Prevention Section, Hazardous Employer Section, Job Safety Information Section, and Education and Training Section.

Legal Advisor

The Legal Advisor Division is a dispute resolution system created to provide legal information and assistance to interested parties who have questions concerning the Arkansas workers' compensation law. The Legal Advisors are attorneys who know both the law and the procedures through which the parties must navigate during the claims process. The Division gives presentations at various conferences and meetings and will make on-site visits to businesses when invited to do so. The Legal Advisors serve as a link between unrepresented claimants and insurance adjusters, and often help resolve problems before they escalate into issues that must be litigated.

Legal Advisors also conduct mediations, legal advisor conferences, and assist the Commission staff.

Medical Cost Containment

The major function of this Division is to oversee the Medical Fee Schedule, which limits the reimbursement to providers for treatment rendered to injured workers and the administration of the Comprehensive Managed Care Program (including requests for changes of physician), which was established by Act 796 of 1993.

Operations and Compliance

This Division's focus is processing compensation claims filed directly with the Commission by parties other than the employer. This Division receives and establishes files for all First Reports of Injury. The Compliance section is the investigative arm of the Commission, making certain all employers under the law have secured payment of compensation. Act 796 of 1993 provided for Certificates of Non-Coverage (CnC), which are processed by the Compliance section.

Self-Insurance

The Self-Insurance Division is responsible for the administration and regulation of the Self-Insurance Program in Arkansas. Commission Rule 099.05 governs the operation of the program. The Division processes the applications for individual self-insurance, group self-insurance, group members, and applications for third-party administrators. The Division prepares an annual renewal evaluation on both individual self-insurers and group self-insurers, subject to Commission approval, to renew the Certificate of Authority for Self-Insurance. The Division prepares annual renewal evaluations on third-party administrators, subject to Commission approval, for renewal of their Certificate of Authority to act as a Third-Party Administrator. The Division also collects the workers' compensation premium tax from the self-insurers and group self-insurers. The Division also administers Rule 099.39 (report card monitoring) for the insurance companies, self-insurers and TPA's.

Special Funds

The Special Funds Division is comprised of two individual funds, the Second Injury Trust Fund and the Death and Permanent Total Disability Trust Fund. The Second Injury Trust Fund was statutorily created to encourage employment of disabled workers by limiting, in the event of subsequent injury, the employer's liability for permanent disability benefits. Act 1415 of 2007 provided that no claims shall be made against the Second Injury Trust Fund on or after January 1, 2008. The Death and Permanent Total Disability Trust Fund pays weekly benefits to permanent and totally disabled workers or dependents of deceased workers after the workers' compensation insurer has paid indemnity liability of a threshold amount up to \$50,000.00 (injuries on or after March 2, 1973, but on or before February 28, 1981) and \$75,000.00 (injuries on or after March 1, 1981, but on or before December 31, 2007) or an indemnity equal to 325 times the maximum total disability rate at the time of the injury (injuries occurring on or after January 1, 2008, but on or before June 30, 2019). Act 5 of Third Extraordinary Session of 2016, provided that no claims shall be made to the Death and Permanent Total Disability Trust Fund after June 30, 2019. Upon the final payment of the liabilities of the liabilities of the Death and Permanent Total Disability Trust Fund under 11-9-502, the current maximum tax rate of three percent (3%) will change to one and five-tenths percent (1.5%).

COMMISSION SUMMARY

As of June 30, 2019, the Arkansas Workers' Commission had **115** authorized positions, and as of June 30, 2020 the Arkansas Workers' Compensation Commission had **115** authorized positions.

As of June 30, 2019, the maximum weekly benefit rate for total disability was **\$695.00**.

As of June 30, 2020, the maximum weekly benefit rate for total disability was **\$711.00**.

As of June 30, 2019, the maximum weekly benefit rate for permanent partial disability was **\$521.00**.

As of June 30, 2020, the maximum weekly benefit rate for permanent partial disability was **\$533.00**.

There were **5,336** indemnity cases reported in Fiscal Year 2019.

There were **5,351** cases closed in Fiscal Year 2019.

There were **5,197** indemnity cases reported in Fiscal Year 2020.

There were **4,815** cases closed in Fiscal Year 2020.

The Administrative Law Judges were assigned **3,264** cases in Fiscal Year 2019. Of those, **892** were full hearings, **1016** were reassignments, **657** were joint petitions, and **699** were joint petition reassignments.

There were **141** appeals to the Full Commission in Fiscal Year 2019.

There were **44** appeals to the Court of Appeals in Fiscal Year 2019.

The Administrative Law Judges were assigned **2,969** cases in Fiscal Year 2020. Of those, **798** were full hearings, **827** were reassignments, **804** were joint petitions, and **540** were joint petition reassignments.

There were **118** appeals to the Full Commission in Fiscal Year 2020.

There were **23** appeals to the Court of Appeals in Fiscal Year 2020.

The Legal Advisors were assigned **92** mediations in Fiscal Year 2019.

The Legal Advisors were assigned **40** mediations in Fiscal Year 2020.

TABLES

REPORTED ACCIDENTS BY MONTH
FISCAL YEAR 2019

Month	Reported Cases	Closed Cases
JULY	468	411
AUGUST	520	520
SEPTEMBER	452	398
OCTOBER	501	563
NOVEMBER	424	425
DECEMBER	398	431
JANUARY	438	489
FEBRUARY	393	401
MARCH	401	463
APRIL	479	403
MAY	429	470
JUNE	433	377
TOTALS	5,336	5,351

REPORTED ACCIDENTS BY MONTH
FISCAL YEAR 2020

Month	Reported Cases	Closed Cases
JULY	404	458
AUGUST	474	443
SEPTEMBER	481	411
OCTOBER	464	396
NOVEMBER	397	329
DECEMBER	383	408
JANUARY	389	514
FEBRUARY	362	405
MARCH	283	266
APRIL	415	353
MAY	490	280
JUNE	655	552
TOTALS	5,197	4,815

MEDICAL ONLY EXPENDITURE REPORT
FISCAL YEAR 2019

Public	Self-Insurer	Private	Total
	\$9,099,150.44	\$9,834,158.74	\$18,933,309.18

MEDICAL ONLY EXPENDITURE REPORT
FISCAL YEAR 2020

Public	Self-Insurer	Private	Total
	\$8,534,250.46	\$8,346,751.01	\$16,881,001.47

EXPENDITURE REPORT - COMPENSABLE CASES

FISCAL YEAR 2019

Expenditure	Private	Self-Ins.	Public	Total
COMPENSATION	\$29,548,346.54	\$13,599,837.42	\$38,649.06	\$43,186,833.02
LUMP SUM	\$576,119.31	\$98,216.31	\$0.00	\$674,335.62
JOINT PETITION	\$16,815,271.50	\$5,184,808.44	\$0.00	\$22,000,079.94
ATTORNEY FEES	\$7,624,301.96	\$2,489,261.22	\$0.00	\$10,113,563.18
OTHER 1	\$2,979,297.44	\$713,022.07	\$0.00	\$3,692,319.51
HOSPITAL	\$15,092,739.58	\$8,404,116.57	\$4,287.57	\$23,501,143.72
MEDICAL	\$38,781,168.53	\$23,637,870.92	\$17,406.73	\$62,436,446.17
MEDICINE	\$3,406,899.69	\$1,991,207.27	\$129.86	\$5,398,236.82
FUNERAL	\$151,254.90	\$38,503.59	\$0.00	\$189,758.49
REHABILITATION	\$1,574,626.05	\$547,252.55	\$2,086.50	\$2,123,965.10
OTHER 2	\$7,376,538.18	\$2,123,999.85	\$37.06	\$9,500,575.09
TOTAL	\$123,926,563.68	\$58,828,096.21	\$62,596.78	\$182,817,256.67

EXPENDITURE REPORT - COMPENSABLE CASES

FISCAL YEAR 2020

Expenditure	Private	Self-Ins.	Public	Total
COMPENSATION	\$31,277,899.80	\$11,733,585.06		\$43,011,484.86
LUMP SUM	\$209,349.45	\$182,508.94		\$391,858.39
JOINT PETITION	\$16,101,041.86	\$3,650,927.47		\$19,751,969.33
ATTORNEY FEES	\$6,616,959.71	\$2,358,182.28		\$8,975,141.99
OTHER 1	\$2,619,705.89	\$512,356.83		\$3,132,062.72
HOSPITAL	\$15,475,656.64	\$4,798,619.74		\$20,274,276.38
MEDICAL	\$45,516,607.91	\$16,546,243.15		\$62,062,851.06
MEDICINE	\$3,755,530.67	\$606,940.50		\$4,362,471.17
FUNERAL	\$135,436.36	\$53,108.63		\$188,544.99
REHABILITATION	\$1,628,415.20	\$301,174.49		\$1,929,589.69
OTHER 2	\$6,925,364.13	\$1,686,391.82		\$8,611,755.95
TOTAL	\$130,261,967.63	\$42,430,038.91		\$172,692,006.54

CASES BY EMPLOYER TYPE

7/1/2018 - 6/30/2019

Cases Reported

Employer Type: Private	
Compensable	3,758
Deaths	52
Totals	3,810
Employer Type: Self Insured	
Compensable	711
Deaths	2
Totals	713
Employer Type: Self Insured Group	
Compensable	801
Deaths	12
Totals	813
TOTAL THIS REPORT:	5,336

Cases Closed

Employer Type Private	
TTD	2,567
TPD	56
PPD	954
PTD	20
Death	93
Totals	3,690
Employer Type Public	
TTD	5
PPD	1
PTD	1
Death	1
Totals	8
Employer Type Self Insured	
TTD	531
TPD	17
PPD	235
PTD	5
Death	12
Totals	800
Employer Type Self Insured Group	
TTD	515
TPD	3
PPD	322
PTD	6
Death	7
Totals	853
TOTAL THIS REPORT:	5,351

CASES BY EMPLOYER TYPE

7/1/2019 - 6/30/2020

Cases Reported

Employer Type: Private	
Compensable	3,600
Deaths	36
Totals	3,636
Employer Type: Self Insured	
Compensable	738
Deaths	3
Totals	741
Employer Type: Self Insured Group	
Compensable	811
Deaths	9
Totals	820
TOTAL THIS REPORT:	5,197

Cases Closed

Employer Type Private	
TTD	2,314
TPD	57
PPD	832
PTD	28
Death	66
Totals	3,297
Employer Type Public	
TTD	1
Death	1
Totals	2
Employer Type Self Insured	
TTD	471
TPD	23
PPD	259
PTD	3
Death	3
Totals	759
Employer Type Self Insured Group	
TTD	509
TPD	7
PPD	224
PTD	1
Death	16
Totals	757
TOTAL THIS REPORT:	4,815

CASES BY COUNTY**FISCAL YEAR 2019**

COUNTY	REPORTED CASES	CLOSED CASES
ARKANSAS	49	46
ASHLEY	32	32
BAXTER	77	78
BENTON	366	362
BOONE	85	86
BRADLEY	20	32
CALHOUN	6	4
CARROLL	36	45
CHICOT	19	18
CLARK	32	40
CLAY	16	15
CLEBURNE	44	36
CLEVELAND	3	5
COLUMBIA	36	25
CONWAY	23	24
CRAIGHEAD	206	220
CRAWFORD	79	81
CRITTENDEN	111	128
CROSS	37	38
DALLAS	23	19
DESHA	26	14
DREW	33	29
FAULKNER	167	171
FRANKLIN	13	9
FULTON	12	8
GARLAND	189	196
GRANT	21	19

CASES BY COUNTY**FISCAL YEAR 2019**

COUNTY	REPORTED CASES	CLOSED CASES
GREENE	77	78
HEMPSTEAD	5	4
HOT SPRING	65	62
HOWARD	36	35
INDEPENDENCE	65	65
IZARD	10	8
JACKSON	24	22
JEFFERSON	162	192
JOHNSON	37	34
LAFAYETTE	5	7
LAWRENCE	17	18
LEE	21	18
LINCOLN	33	24
LITTLE RIVER	20	25
LOGAN	32	30
LONOKE	68	61
MADISON	16	14
MARION	23	14
MILLER	94	86
MISSISSIPPI	77	71
MONROE	16	13
MONTGOMERY	13	10
NEVADA	18	8
NEWTON	3	4
NO COUNTY	13	17
OUACHITA	36	43
OUT OF STATE	82	91

CASES BY COUNTY**FISCAL YEAR 2019**

COUNTY	REPORTED CASES	CLOSED CASES
PERRY	4	5
PHILLIPS	42	43
PIKE	51	43
POINSETT	21	26
POLK	34	37
POPE	134	134
PRAIRIE	2	3
PULASKI	1,081	1,006
RANDOLPH	36	27
SALINE	106	104
SCOTT	7	8
SEARCY	7	4
SEBASTIAN	223	277
SEVIER	14	11
SHARP	18	18
ST FRANCIS	45	53
STONE	11	7
UNION	87	87
VAN BUREN	22	34
WASHINGTON	409	413
WHITE	119	144
WOODRUFF	10	12
YELL	24	21
TOTALS:	5,336	5,351

CASES BY COUNTY**FISCAL YEAR 2020**

COUNTY	REPORTED CASES	CLOSED CASES
ARKANSAS	45	40
ASHLEY	38	28
BAXTER	65	65
BENTON	377	349
BOONE	47	59
BRADLEY	30	26
CALHOUN	4	5
CARROLL	36	42
CHICOT	16	10
CLARK	45	38
CLAY	15	18
CLEBURNE	29	44
CLEVELAND	2	2
COLUMBIA	39	40
CONWAY	22	17
CRAIGHEAD	214	168
CRAWFORD	65	72
CRITTENDEN	144	108
CROSS	26	35
DALLAS	14	19
DESHA	27	34
DREW	27	27
FAULKNER	149	129
FRANKLIN	15	15
FULTON	6	9
GARLAND	176	153
GRANT	25	25

CASES BY COUNTY**FISCAL YEAR 2020**

COUNTY	REPORTED CASES	CLOSED CASES
GREENE	64	74
HEMPSTEAD	4	4
HOT SPRING	65	49
HOWARD	24	29
INDEPENDENCE	73	82
IZARD	12	9
JACKSON	33	24
JEFFERSON	215	157
JOHNSON	26	32
LAFAYETTE	5	12
LAWRENCE	33	31
LEE	50	9
LINCOLN	104	38
LITTLE RIVER	14	19
LOGAN	18	20
LONOKE	53	64
MADISON	14	16
MARION	22	18
MILLER	76	78
MISSISSIPPI	91	71
MONROE	4	7
MONTGOMERY	6	9
NEVADA	12	18
NEWTON	2	2
NO COUNTY	8	13
OUACHITA	40	40
OUT OF STATE	193	122

CASES BY COUNTY**FISCAL YEAR 2020**

COUNTY	REPORTED CASES	CLOSED CASES
PERRY	5	4
PHILLIPS	30	33
PIKE	23	24
POINSETT	20	17
POLK	23	36
POPE	77	86
PRAIRIE	12	7
PULASKI	1,007	930
RANDOLPH	34	32
SALINE	115	110
SCOTT	4	4
SEARCY	6	4
SEBASTIAN	223	233
SEVIER	11	11
SHARP	11	19
ST FRANCIS	42	37
STONE	6	12
UNION	84	85
VAN BUREN	18	14
WASHINGTON	335	328
WHITE	110	126
WOODRUFF	13	16
YELL	29	23
TOTALS:	5,197	4,815

CASES BY INDUSTRY**FISCAL YEAR 2019**

INDUSTRY	REPORTED CASES	CLOSED CASES	DEATH CASES
ADMIN OF ECONOMIC PROGRAMS	1	0	0
ADMIN. OF HUMAN RESOURCES	3	2	0
AGRICULTURAL PRODUCTION-CROPS	11	14	2
AGRICULTURAL PRODUCTION-LIVESTOCK	11	9	0
AGRICULTURAL SERVICES	37	39	1
AMUSEMENT & RECREATION SERV	35	18	0
APPAREL AND ACCESSORY STORES	4	5	0
APPAREL AND OTHER TEXTILE	4	9	0
AUTO REPAIR,SERVICES&PARKING	19	16	1
AUTOMOTIVE DEALERS & SERVICE STATION	62	59	0
BUILDING MATERIALS &GARDEN SUPP	40	46	0
BUSINESS SERVICES	102	133	1
CHEMICALS AND ALLIED PRODUCTS	22	27	0
COAL MINING	0	1	0
COMMUNICATIONS	16	10	0
CONSTRUCTION-SPECIAL TRADE CONTRAC	201	217	0
DEPOSITORY INSTITUTIONS	10	6	0
EATING AND DRINKING PLACES	175	167	0
EDUCATIONAL SERVICES/OLD CODE	281	268	2
ELECTRIC, GAS & SANITARY SERVICES	66	70	4
ELECTRONIC & OTHER ELECTRICAL EQUIPM	35	48	0
ENGINEERING & MANAGEMENT SERV	15	16	0
ENVIRONMENTAL QUALITY & HOUSING	1	5	0
EXECUTIVE,LEGISLATIVE & GENERAL	0	8	0
FABRICATED METAL PRODUCTS	54	50	2
FISHING, HUNTING AND TRAPPING	1	1	0
FOOD AND KINDRED PRODUCTS	167	168	0
FOOD STORES	59	75	0
FORESTRY	1	2	0
FURN. & HOMEFURNISHING STORES	13	14	0
FURNITURE AND FIXTURES	9	7	1
GENERAL BUILDING CONTRACTORS	32	26	0

CASES BY INDUSTRY**FISCAL YEAR 2019**

INDUSTRY	REPORTED CASES	CLOSED CASES	DEATH CASES
GENERAL MERCHANDISE STORES	96	93	1
HEALTH SERVICES	321	363	1
HEAVY CONSTRUCTION EXCL BUILDINGS	83	116	1
HOLDING & OTHER INVESTMENT OFFICE	1	2	0
HOTELS & OTHER LODGING PLACES	24	25	1
INDUSTRIAL MACHINERY & EQUIP	56	54	0
INSURANCE AGTS, BROKERS & SERV	0	1	0
INSURANCE CARRIERS	4	2	0
JUSTICE,PUBLIC ORDER & SAFETY	143	180	0
LEATHER AND LEATHER PRODUCTS	9	5	0
LEGAL SERVICES	3	5	0
LOCAL & INTERURBAN PASSENGER TRANSP	19	36	0
LUMBER & WOOD PRODUCTS	70	89	2
MEAS ANALYZ & CONTR INSTRUMENTS	3	12	0
MEMBERSHIP ORGANIZATIONS	24	24	0
METAL MINING	1	3	0
MISCELLANEOUS MFG INDUSTRIES	15	8	0
MISCELLANEOUS REPAIR SERVICES	7	8	0
MISCELLANEOUS RETAIL	27	33	0
MOTION PICTURES	5	7	0
MUSEUMS,BOTANICAL,ZOOLOGICAL GARD	0	1	0
NATIONAL SECURITY & INTL AFFAIRS	0	2	0
NONCLASSIFIABLE ESTABLISHMENTS	1,970	1,762	30
NONMETALLIC MINERALS,EXCEPT FUELS	15	15	1
OIL AND GAS EXTRACTION	23	15	1
PAPER AND ALLIED PRODUCTS	53	43	0
PERSONAL SERVICES	18	17	0
PETROLEUM AND COAL PRODUCTS	4	6	0
PRIMARY METAL INDUSTRIES	30	28	0
PRINTING AND PUBLISHING	11	12	0
RAILROAD TRANSPORTATION	0	2	0
REAL ESTATE	17	13	1

CASES BY INDUSTRY

FISCAL YEAR 2019

INDUSTRY	REPORTED CASES	CLOSED CASES	DEATH CASES
RUBBER & MISC. PLASTICS PRODUCTS	30	41	0
SECURITY AND COMMODITY BROKERS	1	0	0
SERVICES, NEC	4	2	0
SOCIAL SERVICES	54	38	1
STONE, CLAY & GLASS & CONCRETE PRODU	37	37	0
TEXTILE MILL PRODUCTS	10	14	0
TOBACCO PRODUCTS	1	2	0
TRANSPORTATION BY AIR	20	28	0
TRANSPORTATION EQUIPMENT	62	60	0
TRANSPORTATION SERVICES	14	15	0
TRUCKING & WAREHOUSING	387	398	10
UNKNOWN	2	14	0
WATER TRANSPORTATION	3	3	0
WHOLESALE TRADE-DURABLE GOODS	91	96	1
WHOLESALE TRADE-NONDURABLE GOODS	81	84	1
TOTALS:	5,336	5,350	66

CASES BY INDUSTRY**FISCAL YEAR 2020**

INDUSTRY	REPORTED CASES	CLOSED CASES	DEATH CASES
ADMIN OF ECONOMIC PROGRAMS	0	2	0
ADMIN. OF HUMAN RESOURCES	0	4	0
AGRICULTURAL PRODUCTION-CROPS	10	7	0
AGRICULTURAL PRODUCTION-LIVESTOCK	11	7	0
AGRICULTURAL SERVICES	35	43	2
AMUSEMENT & RECREATION SERV	20	32	0
APPAREL AND ACCESSORY STORES	6	4	0
APPAREL AND OTHER TEXTILE	6	2	0
AUTO REPAIR,SERVICES&PARKING	20	27	0
AUTOMOTIVE DEALERS & SERVICE STATION	40	42	0
BUILDING MATERIALS &GARDEN SUPP	41	37	0
BUSINESS SERVICES	80	84	0
CHEMICALS AND ALLIED PRODUCTS	18	23	0
COMMUNICATIONS	8	18	0
CONSTRUCTION-SPECIAL TRADE CONTRAC	187	173	3
DEPOSITORY INSTITUTIONS	18	15	0
EATING AND DRINKING PLACES	146	143	0
EDUCATIONAL SERVICES/OLD CODE	239	263	0
ELECTRIC, GAS & SANITARY SERVICES	63	52	2
ELECTRONIC & OTHER ELECTRICAL EQUIPM	20	30	0
ENGINEERING & MANAGEMENT SERV	16	10	0
ENVIRONMENTAL QUALITY & HOUSING	2	5	0
EXECUTIVE,LEGISLATIVE & GENERAL	0	2	0
FABRICATED METAL PRODUCTS	54	55	0
FOOD AND KINDRED PRODUCTS	112	154	1
FOOD STORES	64	56	0
FORESTRY	1	1	0
FURN. & HOMEFURNISHING STORES	15	12	0
FURNITURE AND FIXTURES	8	9	0
GENERAL BUILDING CONTRACTORS	34	39	1
GENERAL MERCHANDISE STORES	103	104	0
HEALTH SERVICES	288	316	0

CASES BY INDUSTRY**FISCAL YEAR 2020**

INDUSTRY	REPORTED CASES	CLOSED CASES	DEATH CASES
HEAVY CONSTRUCTION EXCL BUILDINGS	75	88	1
HOTELS & OTHER LODGING PLACES	24	20	1
INDUSTRIAL MACHINERY & EQUIP	52	54	0
INSURANCE AGTS, BROKERS & SERV	1	1	0
INSURANCE CARRIERS	3	4	0
JUSTICE,PUBLIC ORDER & SAFETY	271	103	1
LEATHER AND LEATHER PRODUCTS	4	9	0
LEGAL SERVICES	0	2	0
LOCAL & INTERURBAN PASSENGER TRANSP	28	25	1
LUMBER & WOOD PRODUCTS	74	77	1
MEAS ANALYZ & CONTR INSTRUMENTS	8	5	0
MEMBERSHIP ORGANIZATIONS	20	20	0
MISCELLANEOUS MFG INDUSTRIES	9	10	0
MISCELLANEOUS REPAIR SERVICES	14	14	0
MISCELLANEOUS RETAIL	27	28	1
MOTION PICTURES	1	1	0
NONCLASSIFIABLE ESTABLISHMENTS	2,057	1,688	23
NONMETALLIC MINERALS,EXCEPT FUELS	12	15	0
OIL AND GAS EXTRACTION	19	25	1
PAPER AND ALLIED PRODUCTS	46	47	0
PERSONAL SERVICES	15	18	0
PETROLEUM AND COAL PRODUCTS	6	8	0
PRIMARY METAL INDUSTRIES	31	37	0
PRINTING AND PUBLISHING	6	7	0
RAILROAD TRANSPORTATION	5	4	0
REAL ESTATE	11	11	2
RUBBER & MISC. PLASTICS PRODUCTS	26	30	0
SERVICES, NEC	2	2	0
SOCIAL SERVICES	65	50	0
STONE, CLAY & GLASS & CONCRETE PRODU	30	30	0
TEXTILE MILL PRODUCTS	3	4	0
TRANSPORTATION BY AIR	18	15	1

CASES BY INDUSTRY

FISCAL YEAR 2020

INDUSTRY	REPORTED CASES	CLOSED CASES	DEATH CASES
TRANSPORTATION EQUIPMENT	57	59	0
TRANSPORTATION SERVICES	11	8	0
TRUCKING & WAREHOUSING	374	374	5
UNKNOWN	3	5	0
WATER TRANSPORTATION	1	2	0
WHOLESALE TRADE-DURABLE GOODS	59	70	0
WHOLESALE TRADE-NONDURABLE GOODS	64	74	1
TOTALS:	5,197	4,815	48

PART OF BODY INJURED**FISCAL YEAR 2019**

PART OF BODY INJURED	REPORTED CASES	CLOSED CASES
ABDOMEN (INCLUDING GROIN)	115	134
ANKLE	269	256
BRAIN	41	31
BUTTOCKS	7	8
CHEST INC: RIBS,STERNUM,AND SOFT TISS	61	58
DISC (NECK AREA)	3	11
DISC (TRUNK AREA)	10	12
EAR(S)	3	3
ELBOW	116	96
EYE(S)	36	42
FACIAL BONES	11	10
FINGER(S)	361	359
FOOT	200	206
GREAT TOE	16	15
HAND	177	173
HEART	28	27
HIP	66	67
INTERNAL ORGANS	10	10
KNEE	653	660
LOW BACK AREA INC:LUMBAR & LUMBO-SAC	507	551
LOWER ARM	93	87
LOWER LEG	157	151
LUMBAR AND/OR SACRAL VERTEBRA	13	22
LUNGS	17	15
MOUTH	6	6
MULT SYSTEMS AND MULT BODY SYSTEMS	97	91
MULTIPLE BODY PARTS INJURY	756	771
MULTIPLE HEAD INJURY	34	37
MULTIPLE LOWER EXTREMITIES INJURY	81	70
MULTIPLE NECK INJURY	7	14
MULTIPLE TRUNK INJURY	18	23

PART OF BODY INJURED**FISCAL YEAR 2019**

PART OF BODY INJURED	REPORTED CASES	CLOSED CASES
MULTIPLE UPPER EXTREMITIES	85	66
NO PHYSICAL INJURY	21	18
NOSE	9	9
OTHER FACIAL SOFT TISSUE	34	24
PELVIS	17	16
SACRUM AND COCCYX	4	3
SHOULDER(S)	600	592
SKULL	42	61
SOFT TISSUE	48	53
SPINAL CORD	1	0
SPINAL CORD	1	1
TEETH	2	1
THIGH	39	30
THUMB	80	79
TOE(S)	30	18
UNDEFINED	2	3
UNKNOWN - INSUFFICIENT INFORMATION	11	17
UNSPEC	1	5
UPPER ARM (INC: CLAVICLE AND SCAPULA)	98	94
UPPER BACK AREA (THORACIC AREA)	34	30
VERTEBRAE	4	3
WRIST	181	181
WRIST(S) & HAND(S)	23	31
TOTALS:	5,336	5,351

PART OF BODY INJURED**FISCAL YEAR 2020**

PART OF BODY INJURED	REPORTED CASES	CLOSED CASES
ABDOMEN (INCLUDING GROIN)	119	106
ANKLE	245	235
BRAIN	31	26
BUTTOCKS	7	5
CHEST INC: RIBS,STERNUM,AND SOFT TISS	73	55
DISC (NECK AREA)	8	5
DISC (TRUNK AREA)	5	6
EAR(S)	3	5
ELBOW	106	98
EYE(S)	38	30
FACIAL BONES	14	10
FINGER(S)	299	320
FOOT	157	175
GREAT TOE	19	16
HAND	149	139
HEART	18	20
HIP	52	48
INTERNAL ORGANS	7	9
KNEE	575	590
LOW BACK AREA INC:LUMBAR & LUMBO-SAC	448	496
LOWER ARM	111	98
LOWER LEG	124	131
LUMBAR AND/OR SACRAL VERTEBRA	19	14
LUNGS	13	14
MOUTH	5	6
MULT SYSTEMS AND MULT BODY SYSTEMS	441	144
MULTIPLE BODY PARTS INJURY	712	701
MULTIPLE HEAD INJURY	64	45
MULTIPLE LOWER EXTREMITIES INJURY	85	70
MULTIPLE NECK INJURY	8	4
MULTIPLE TRUNK INJURY	21	17

PART OF BODY INJURED**FISCAL YEAR 2020**

PART OF BODY INJURED	REPORTED CASES	CLOSED CASES
MULTIPLE UPPER EXTREMITIES	80	76
NO PHYSICAL INJURY	14	12
NOSE	8	6
OTHER FACIAL SOFT TISSUE	19	24
PELVIS	14	18
SACRUM AND COCCYX	3	5
SHOULDER(S)	514	543
SKULL	34	35
SOFT TISSUE	38	41
SPINAL CORD	3	3
SPINAL CORD	0	1
TEETH	2	2
THIGH	44	32
THUMB	77	60
TOE(S)	22	23
UNDEFINED	1	2
UNKNOWN - INSUFFICIENT INFORMATION	15	9
UNSPEC	1	5
UPPER ARM (INC: CLAVICLE AND SCAPULA)	88	77
UPPER BACK AREA (THORACIC AREA)	23	28
VERTEBRAE	3	2
WRIST	185	149
WRIST(S) & HAND(S)	33	23
TOTALS:	5,197	4,814

**FATALITIES BY AGE AND SEX
FISCAL YEAR 2019**

Age In Years	Female	Male	Unknown	Total
14-19	0	0	0	0
20-29	1	4	0	5
30-39	1	11	0	12
40-49	0	13	0	13
50-59	2	16	0	18
60-69	1	12	0	13
70-79	1	4	0	5
Unknown	0	0	0	0
TOTAL	6	60	0	66
TOTAL FATALITIES FOR FY 2019 - 66				

**FATALITIES BY AGE AND SEX
FISCAL YEAR 2020**

Age In Years	Female	Male	Unknown	Total
14-19	0	0	0	0
20-29	0	5	0	5
30-39	3	11	0	14
40-49	0	8	0	8
50-59	1	9	0	10
60-69	0	9	0	9
70-79	0	2	0	2
Unknown	0	0	0	0
TOTAL	4	44	0	48
TOTAL FATALITIES FOR FY 2020 - 48				