



# BIENNIAL REPORT

## ARKANSAS DEPARTMENT OF LABOR & LICENSING

## ARKANSAS WORKERS' COMPENSATION COMMISSION DIVISION



Biennium  
2020-2021  
2021-2022



ARKANSAS  
WORKERS' COMPENSATION  
COMMISSION  
BIENNIAL REPORT  
FOR THE FISCAL YEARS  
2021 & 2022

ASA HUTCHINSON, GOVERNOR

DARYL BASSETT, SECRETARY

Scotty Dale Douthit, Chairman  
Christopher Palmer, Commissioner  
Scott Willhite, Commissioner

David Greenbaum, CEO

## Table of Contents

Mission.....	i
Introduction.....	ii
Organizational Chart.....	1
Divisions.....	2
Summary.....	6
Tables.....	7

## **MISSION**

*The Mission of the Arkansas Workers' Compensation Commission is to administer and enforce Arkansas Workers' Compensation Law as authorized by the Constitution and as enacted by the Legislature.*

---

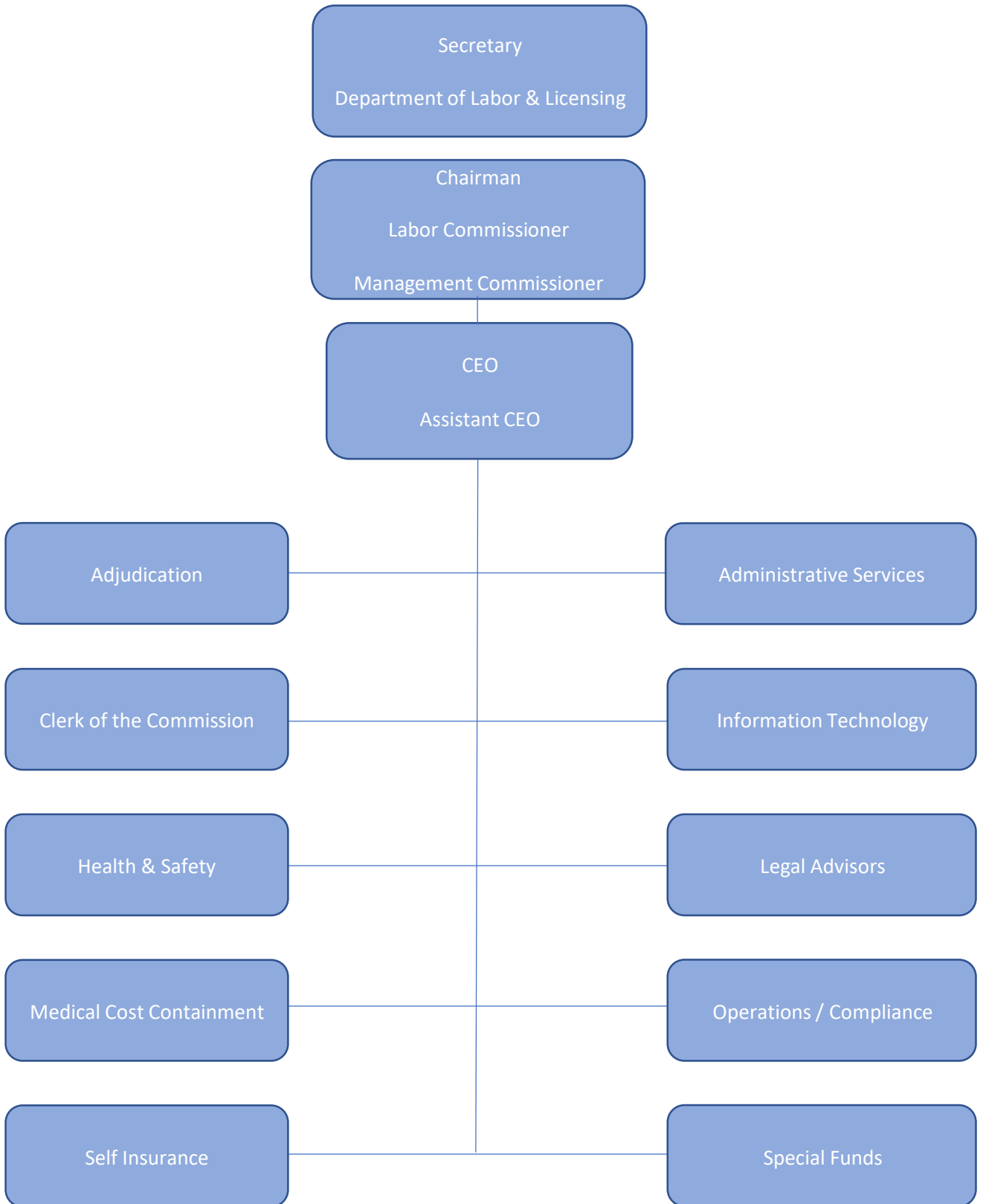
## INTRODUCTION

The Arkansas Workers' Compensation Commission (AWCC) and the law it administers was effective December 5, 1940. It is not an insurance company; it enforces the workers' compensation laws to ensure all covered employers secure coverage from commercial carriers or through self-insurance programs. Additionally, the Commission monitors workers' compensation awards to ensure benefit providers make timely payments to eligible claimants. Workers' compensation insurance is directed to the moral, social, and economic benefits of protecting employers, employees, and their dependents from financial burdens imposed by job-related injury and disease.

The extent of disability and the fairness of total compensation can be an item of dispute among the parties involved. Should any dispute arise among the parties involved, the Arkansas Workers' Compensation Commission, through its three Commissioners and a staff of Administrative Law Judges, may adjudicate these cases and impose binding decisions. These decisions can be appealed to the Arkansas Court of Appeals and the Arkansas Supreme Court.

Each Commissioner is appointed by the Governor for a term of six years. One represents the interests of labor, one represents management, and the Chairman acts as a neutral party, representing the interests of the public. The three Commissioners, eight Administrative Law Judges, and three Legal Advisors accomplish all judicial duties. Administrative functions are directed by the Chief Executive Officer.

# ARKANSAS WORKERS' COMPENSATION COMMISSION



## THE COMMISSION AND ITS DIVISIONS

### The Commission

The three-member Commission is responsible for the administration of the workers' compensation law in Arkansas. The Commissioners are appointed by the Governor for a term of six years. One of the Commissioners represents the interests of labor, another management, and the Chairman acts as a neutral party, representing the interests of the public.

### Executive Office

The Chief Executive Officer and Assistant Chief Executive Officer oversee administrative and regulatory functions of the Arkansas Workers' Compensation Commission including monitoring all claims and benefit payments to injured workers, processing settlements, lump sum payments, and requests for changes of physicians; ensuring employers maintain required insurance coverage; approving applications of employers to act as self-insurers; and participating in programs to explain the functions of the Commission to the general public. The divisions assisting in carrying out these functions are Adjudication, Administrative Services, Clerk of the Commission, Health and Safety, Information Technology, Legal Advisors, Medical Cost Containment, Operations and Compliance, Self-Insurance, and Special Funds. The Executive Office also coordinates the annual educational conference and ensures the annual and biennial reports are completed and distributed.

### Adjudication

The Adjudication Division adjudicates all pending claims for temporary and permanent disability benefits to legitimately injured workers who suffer an injury or disease arising out of and in the course of their employment, together with reasonable and necessary medical expenses. In addition, the Adjudication Division enforces the provision of the Act requiring compliance by employers and may impose fines and sanctions, when appropriate.

The Division is currently staffed by eight (8) Administrative Law Judges (ALJs), together with support staff for the Judges. Five (5) ALJs have offices in Little Rock and three (3) are in Springdale.

Based upon the number of claims filed within each county, Arkansas has been divided into six (6) geographic districts. Administrative Law Judges travel throughout the state within an assigned district and conduct hearings when disputes arise between injured employees and their employers and/or insurance carriers. Cases are assigned according to the county in which the incident occurred. Pulaski County cases are assigned to all ALJs who have offices in Little Rock as a means of balancing the overall caseload.

### Clerk of the Commission

The Clerk's office was established to serve as a conduit for filing, processing and internal routing of pleadings, legal documents and other notices received by the Workers' Compensation Commission. This office is responsible for the assignment of all cases to the Administrative Law Judges and Legal Advisors. In addition, the Clerk maintains the required dockets for cases appealed to the Full Commission, prepares the record/transcripts for lodging with the Court of Appeals, reviews the record on appealed cases, certifies record composition, and certifies copies of documents from the Commission files requested in writing from interested parties.

### Administrative Services

#### Fiscal Section:

The Commission's operations are funded from a premium tax (limited by law to three percent) on workers' compensation premiums paid by insurance companies writing workers' compensation policies, companies qualifying as self-insurers, and all public employers. The Fiscal Section of the Administrative Services Division disburses these funds. All purchasing, accounting, investments, travel, and budget analyses are the responsibility of this division.

#### Human Resources Section:

The Human Resources section of the Administrative Services Division is responsible for developing, implementing, and monitoring Commission human resource systems and policy, as well as payroll transactions. Job announcement, interviewing and selection of applicants, performance evaluation, leave accounting, quality management, training and the switchboard are administered by the division. In addition, human resources coordinates with the Office of Personnel Management, provides support to the Chief Executive Officer in the compilation and analysis of Commission personnel budget requests, and counsels with agency management and staff regarding the resolution of sensitive issues associated with performance, discipline, promotion, and selection or other related matters.

Administrative Services also directs the functions of the mail room, security, and maintenance for the building.

### Information Technology

The IT Division is responsible for the automation of the Commission. The backbone of the system is an in-house developed application that captures data from the inception of a claim and maintains and updates this data throughout the life of the claim. The Division currently maintains databases consisting of reported claims, employers, insurance carriers and adjusters, and various other supporting databases.



### Health and Safety

Act 796 of 1993 created the Health and Safety Division that serves as a resource center on safety issues pertinent to employers and employees in Arkansas. Within the Division are the following sections: Accident Prevention Section, Hazardous Employer Section, Voluntary Program for Drug-Free Workplaces, and Education and Training Section.

### Legal Advisor

The Legal Advisor Division is a dispute resolution system created to provide legal information and assistance to interested parties who have questions concerning the Arkansas workers' compensation law. The Legal Advisors are attorneys who know both the law and the procedures through which the parties must navigate during the claims process. The Division gives presentations at various conferences and meetings and will make on-site visits to businesses when invited to do so. The Legal Advisors serve as a link between unrepresented claimants and insurance adjusters, and often help resolve problems before they escalate into issues that must be litigated.

Legal Advisors also conduct mediations, legal advisor conferences, and assist the Commission staff.

### Medical Cost Containment

The major function of this Division is to oversee the Medical Fee Schedule, which limits the reimbursement to providers for treatment rendered to injured workers and the administration of the Comprehensive Managed Care Program (including requests for changes of physician), which was established by Act 796 of 1993.

### Operations and Compliance

This Division's focus is processing compensation claims filed directly with the Commission by parties other than the employer. This Division receives and establishes files for all First Reports of Injury. The Compliance section is the investigative arm of the Commission, making certain all employers under the law have secured payment of compensation. Act 796 of 1993 provided for Certificates of Non-Coverage (CnC), which are processed by the Compliance section. The Division also administers Rule 099.39 (report card monitoring) for the insurance companies, self-insurers and TPA's.

### Self-Insurance

The Self-Insurance Division is responsible for the administration and regulation of the Self-Insurance Program in Arkansas. Commission Rule 099.05 governs the operation of the program. The Division processes the applications for individual self-insurance, group self-insurance, group members, and applications for third-party administrators. The Division prepares an annual renewal evaluation on both individual self-insurers and group self-insurers, subject to Commission approval, to renew the Certificate of Authority for Self-Insurance. The Division prepares annual renewal evaluations on third-party administrators, subject to Commission approval, for renewal of their Certificate of Authority to act as a Third-Party Administrator. The Division also collects the workers' compensation premium tax from the self-insurers and group self-insurers.

### Special Funds

The Special Funds Division is comprised of two individual funds, the Second Injury Trust Fund and the Death and Permanent Total Disability Trust Fund. The Second Injury Trust Fund was statutorily created to encourage employment of disabled workers by limiting, in the event of subsequent injury, the employer's liability for permanent disability benefits. Act 1415 of 2007 provided that no claims shall be made against the Second Injury Trust Fund on or after January 1, 2008. The Death and Permanent Total Disability Trust Fund pays weekly benefits to permanent and totally disabled workers or dependents of deceased workers after the workers' compensation insurer has paid indemnity liability of a threshold amount up to \$75,000.00 (injuries on or after March 1, 1947, but on or before December 31, 2007) or an amount equal to 325 times the maximum total disability rate at the time of the injury (injuries occurring on or after January 1, 2008, but on or before June 30, 2019). Act 5 of Third Extraordinary Session of 2016, provided that no claims shall be made to the Death and Permanent Total Disability Trust Fund after June 30, 2019. Upon the final payment of the liabilities of the Death and Permanent Total Disability Trust Fund under 11-9-502, the current maximum tax rate of three percent (3%) will change to one and five-tenths percent (1.5%).

## COMMISSION SUMMARY

As of June 30, 2021, the Arkansas Workers' Commission had **115** authorized positions, and as of June 30, 2022, the Arkansas Workers' Compensation Commission had **109** authorized positions.

As of June 30, 2021, the maximum weekly benefit rate for total disability was **\$736.00**.

As of June 30, 2022, the maximum weekly benefit rate for total disability was **\$790.00**.

As of June 30, 2021, the maximum weekly benefit rate for permanent partial disability was **\$552.00**.

As of June 30, 2022, the maximum weekly benefit rate for permanent partial disability was **\$593.00**.

There were **8,417** indemnity cases reported in Fiscal Year 2021.

There were **7,970** cases closed in Fiscal Year 2021.

There were **5,815** indemnity cases reported in Fiscal Year 2022.

There were **5,455** cases closed in Fiscal Year 2022.

The Administrative Law Judges were assigned **3,130** cases in Fiscal Year 2021. Of those, **797** were full hearings, **1,069** were reassignments, **680** were joint petitions, and **584** were joint petition reassignments.

There were **106** appeals to the Full Commission in Fiscal Year 2021.

There were **37** appeals to the Court of Appeals in Fiscal Year 2021.

The Administrative Law Judges were assigned **2,446** cases in Fiscal Year 2022. Of those, **677** were full hearings, **704** were reassignments, **610** were joint petitions, and **455** were joint petition reassignments.

There were **100** appeals to the Full Commission in Fiscal Year 2022.

There were **34** appeals to the Court of Appeals in Fiscal Year 2022.

The Legal Advisors were assigned **41** mediations in Fiscal Year 2021.

The Legal Advisors were assigned **66** mediations in Fiscal Year 2022.

# TABLES

**REPORTED ACCIDENTS BY MONTH**  
**FISCAL YEAR 2021**

<b>Month</b>	<b>Reported Cases</b>	<b>Closed Cases</b>
<b>JULY</b>	734	442
<b>AUGUST</b>	648	484
<b>SEPTEMBER</b>	713	543
<b>OCTOBER</b>	982	735
<b>NOVEMBER</b>	918	716
<b>DECEMBER</b>	866	667
<b>JANUARY</b>	831	937
<b>FEBRUARY</b>	625	772
<b>MARCH</b>	655	950
<b>APRIL</b>	485	582
<b>MAY</b>	490	614
<b>JUNE</b>	470	528
<b>TOTALS</b>	<b>8,417</b>	<b>7,970</b>

**REPORTED ACCIDENTS BY MONTH**  
**FISCAL YEAR 2022**

<b>Month</b>	<b>Reported Cases</b>	<b>Closed Cases</b>
<b>JULY</b>	496	462
<b>AUGUST</b>	611	518
<b>SEPTEMBER</b>	528	550
<b>OCTOBER</b>	442	432
<b>NOVEMBER</b>	453	372
<b>DECEMBER</b>	434	261
<b>JANUARY</b>	560	403
<b>FEBRUARY</b>	451	358
<b>MARCH</b>	503	612
<b>APRIL</b>	425	479
<b>MAY</b>	463	444
<b>JUNE</b>	449	564
<b>TOTALS</b>	<b>5,815</b>	<b>5,455</b>

**CASES BY COUNTY****FISCAL YEAR 2021**

<b>COUNTY</b>	<b>REPORTED CASES</b>	<b>CLOSED CASES</b>
ARKANSAS	84	93
ASHLEY	40	48
BAXTER	172	148
BENTON	448	411
BOONE	74	72
BRADLEY	59	38
CALHOUN	6	2
CARROLL	32	33
CHICOT	30	19
CLARK	41	40
CLAY	57	50
CLEBURNE	101	95
CLEVELAND	3	4
COLUMBIA	39	36
CONWAY	25	24
CRAIGHEAD	898	823
CRAWFORD	74	64
CRITTENDEN	194	199
CROSS	44	43
DALLAS	13	15
DESHA	33	35
DREW	45	37
FAULKNER	288	284
FRANKLIN	27	21
FULTON	10	13
GARLAND	301	299
GRANT	24	20

**CASES BY COUNTY****FISCAL YEAR 2021**

<b>COUNTY</b>	<b>REPORTED CASES</b>	<b>CLOSED CASES</b>
GREENE	87	75
HEMPSTEAD	3	4
HOT SPRING	107	124
HOWARD	49	45
INDEPENDENCE	116	106
IZARD	9	11
JACKSON	45	46
JEFFERSON	198	214
JOHNSON	36	39
LAFAYETTE	2	3
LAWRENCE	68	51
LEE	23	49
LINCOLN	59	92
LITTLE RIVER	20	13
LOGAN	39	35
LONOKE	71	62
MADISON	29	18
MARION	29	27
MILLER	97	110
MISSISSIPPI	100	100
MONROE	5	6
MONTGOMERY	5	8
NEVADA	63	64
NEWTON	1	1
NO COUNTY	5	6
OUACHITA	65	73
OUT OF STATE	355	224



**CASES BY COUNTY****FISCAL YEAR 2021**

<b>COUNTY</b>	<b>REPORTED CASES</b>	<b>CLOSED CASES</b>
PERRY	3	4
PHILLIPS	44	31
PIKE	58	59
POINSETT	85	82
POLK	32	30
POPE	141	127
PRAIRIE	13	16
PULASKI	1,412	1,395
RANDOLPH	46	54
SALINE	201	183
SCOTT	10	13
SEARCY	13	9
SEBASTIAN	266	253
SEVIER	23	26
SHARP	26	21
ST FRANCIS	63	57
STONE	12	8
UNION	171	150
VAN BUREN	28	27
WASHINGTON	598	532
WHITE	286	281
WOODRUFF	10	13
YELL	28	27
<b>TOTALS:</b>	<b>8,417</b>	<b>7,970</b>

**CASES BY COUNTY****FISCAL YEAR 2022**

<b>COUNTY</b>	<b>REPORTED CASES</b>	<b>CLOSED CASES</b>
ARKANSAS	33	39
ASHLEY	28	24
BAXTER	55	71
BENTON	399	375
BOONE	94	80
BRADLEY	25	40
CALHOUN	5	5
CARROLL	33	32
CHICOT	10	15
CLARK	29	37
CLAY	31	33
CLEBURNE	34	31
CLEVELAND	8	4
COLUMBIA	30	28
CONWAY	29	26
CRAIGHEAD	490	540
CRAWFORD	73	73
CRITTENDEN	101	122
CROSS	29	23
DALLAS	15	16
DESHA	17	17
DREW	28	35
FAULKNER	181	153
FRANKLIN	22	17
FULTON	16	10
GARLAND	176	176
GRANT	19	17

**CASES BY COUNTY****FISCAL YEAR 2022**

<b>COUNTY</b>	<b>REPORTED CASES</b>	<b>CLOSED CASES</b>
GREENE	48	61
HEMPSTEAD	3	6
HOT SPRING	47	46
HOWARD	36	33
INDEPENDENCE	92	85
IZARD	8	6
JACKSON	27	24
JEFFERSON	144	116
JOHNSON	28	24
LAFAYETTE	4	2
LAWRENCE	22	27
LEE	8	10
LINCOLN	26	17
LITTLE RIVER	14	21
LOGAN	21	22
LONOKE	81	60
MADISON	16	15
MARION	22	16
MILLER	82	65
MISSISSIPPI	91	83
MONROE	10	11
MONTGOMERY	4	2
NEVADA	11	16
NEWTON	2	2
NO COUNTY	32	15
OUACHITA	53	59
OUT OF STATE	381	322

**CASES BY COUNTY****FISCAL YEAR 2022**

<b>COUNTY</b>	<b>REPORTED CASES</b>	<b>CLOSED CASES</b>
PERRY	6	5
PHILLIPS	26	30
PIKE	50	34
POINSETT	35	25
POLK	30	23
POPE	100	103
PRAIRIE	5	5
PULASKI	1,037	947
RANDOLPH	32	37
SALINE	142	114
SCOTT	9	6
SEARCY	7	8
SEBASTIAN	248	212
SEVIER	5	6
SHARP	21	19
ST FRANCIS	36	33
STONE	12	17
UNION	95	85
VAN BUREN	20	23
WASHINGTON	413	354
WHITE	128	133
WOODRUFF	16	13
YELL	19	18
<b>TOTALS:</b>	<b>5,815</b>	<b>5,455</b>

**CASES BY INDUSTRY****FISCAL YEAR 2021**

<b>INDUSTRY</b>	<b>REPORTED CASES</b>	<b>CLOSED CASES</b>	<b>DEATH CASES</b>
ADMIN OF ECONOMIC PROGRAMS	0	1	0
ADMIN. OF HUMAN RESOURCES	0	2	0
AGRICULTURAL PRODUCTION-CROPS	19	12	0
AGRICULTURAL PRODUCTION-LIVESTOCK	8	11	0
AGRICULTURAL SERVICES	52	37	4
AMUSEMENT & RECREATION SERV	14	18	0
APPAREL AND ACCESSORY STORES	1	1	0
APPAREL AND OTHER TEXTILE	9	6	0
AUTO REPAIR,SERVICES&PARKING	34	21	1
AUTOMOTIVE DEALERS & SERVICE STATION	62	53	0
BUILDING MATERIALS &GARDEN SUPP	131	116	0
BUSINESS SERVICES	90	82	0
CHEMICALS AND ALLIED PRODUCTS	18	15	0
COMMUNICATIONS	9	8	0
CONSTRUCTION-SPECIAL TRADE CONTRAC	153	186	1
DEPOSITORY INSTITUTIONS	21	16	0
EATING AND DRINKING PLACES	195	176	1
EDUCATIONAL SERVICES/OLD CODE	195	228	1
ELECTRIC, GAS & SANITARY SERVICES	39	43	0
ELECTRONIC & OTHER ELECTRICAL EQUIPM	25	24	1
ENGINEERING & MANAGEMENT SERV	10	12	0
ENVIRONMENTAL QUALITY & HOUSING	2	0	0
EXECUTIVE,LEGISLATIVE & GENERAL	1	2	0
FABRICATED METAL PRODUCTS	52	50	0
FINANCE,TAXATION & MONETARY POLICY	0	1	0
FISHING, HUNTING AND TRAPPING	0	1	0
FOOD AND KINDRED PRODUCTS	149	152	3
FOOD STORES	68	77	0
FORESTRY	1	1	0
FURN. & HOMEFURNISHING STORES	6	13	0
FURNITURE AND FIXTURES	4	8	0
GENERAL BUILDING CONTRACTORS	18	28	1

**CASES BY INDUSTRY****FISCAL YEAR 2021**

<b>INDUSTRY</b>	<b>REPORTED CASES</b>	<b>CLOSED CASES</b>	<b>DEATH CASES</b>
GENERAL MERCHANDISE STORES	100	103	2
HEALTH SERVICES	1,290	1,133	5
HEAVY CONSTRUCTION EXCL BUILDINGS	66	74	0
HOLDING & OTHER INVESTMENT OFFICE	0	1	0
HOTELS & OTHER LODGING PLACES	27	20	0
INDUSTRIAL MACHINERY & EQUIP	40	44	0
INSURANCE AGTS, BROKERS & SERV	3	1	0
INSURANCE CARRIERS	2	2	0
JUSTICE,PUBLIC ORDER & SAFETY	159	245	1
LEATHER AND LEATHER PRODUCTS	6	3	0
LEGAL SERVICES	1	0	0
LOCAL & INTERURBAN PASSENGER TRANSP	46	39	1
LUMBER & WOOD PRODUCTS	55	70	3
MEAS ANALYZ & CONTR INSTRUMENTS	7	7	0
MEMBERSHIP ORGANIZATIONS	22	19	0
METAL MINING	2	0	0
MISCELLANEOUS MFG INDUSTRIES	16	12	1
MISCELLANEOUS REPAIR SERVICES	7	11	0
MISCELLANEOUS RETAIL	26	21	0
NONCLASSIFIABLE ESTABLISHMENTS	4,272	3,841	46
NONMETALLIC MINERALS,EXCEPT FUELS	3	6	0
OIL AND GAS EXTRACTION	13	14	0
PAPER AND ALLIED PRODUCTS	41	35	0
PERSONAL SERVICES	9	9	0
PETROLEUM AND COAL PRODUCTS	2	4	0
PIPELINES EXCEPT NATURAL GAS	0	1	0
PRIMARY METAL INDUSTRIES	22	30	0
PRINTING AND PUBLISHING	7	6	0
RAILROAD TRANSPORTATION	2	5	0
REAL ESTATE	10	16	1
RUBBER & MISC. PLASTICS PRODUCTS	41	32	0
SERVICES, NEC	2	3	0

# CASES BY INDUSTRY

FISCAL YEAR 2021

INDUSTRY	REPORTED CASES	CLOSED CASES	DEATH CASES
SOCIAL SERVICES	37	56	1
STONE, CLAY & GLASS & CONCRETE PRODU	36	32	1
TEXTILE MILL PRODUCTS	0	5	0
TRANSPORTATION BY AIR	12	14	0
TRANSPORTATION EQUIPMENT	45	48	0
TRANSPORTATION SERVICES	3	4	0
TRUCKING & WAREHOUSING	419	432	2
UNKNOWN	4	6	0
WATER TRANSPORTATION	2	1	0
WHOLESALE TRADE-DURABLE GOODS	90	86	0
WHOLESALE TRADE-NONDURABLE GOODS	83	78	1
<b>TOTALS:</b>	8,416	7,970	78

**CASES BY INDUSTRY****FISCAL YEAR 2022**

<b>INDUSTRY</b>	<b>REPORTED CASES</b>	<b>CLOSED CASES</b>	<b>DEATH CASES</b>
ADMIN OF ECONOMIC PROGRAMS	0	1	0
ADMIN. OF HUMAN RESOURCES	0	2	0
AGRICULTURAL PRODUCTION-CROPS	2	11	0
AGRICULTURAL PRODUCTION-LIVESTOCK	3	7	0
AGRICULTURAL SERVICES	10	26	0
AMUSEMENT & RECREATION SERV	5	9	0
APPAREL AND ACCESSORY STORES	1	2	0
APPAREL AND OTHER TEXTILE	0	3	0
AUTO REPAIR,SERVICES&PARKING	7	13	0
AUTOMOTIVE DEALERS & SERVICE STATION	12	43	0
BUILDING MATERIALS &GARDEN SUPP	100	108	0
BUSINESS SERVICES	21	38	0
CHEMICALS AND ALLIED PRODUCTS	7	13	1
COMMUNICATIONS	3	6	0
CONSTRUCTION-SPECIAL TRADE CONTRAC	40	117	0
DEPOSITORY INSTITUTIONS	5	4	0
EATING AND DRINKING PLACES	30	76	1
EDUCATIONAL SERVICES/OLD CODE	4	144	0
ELECTRIC, GAS & SANITARY SERVICES	8	24	0
ELECTRONIC & OTHER ELECTRICAL EQUIPM	9	16	0
ENGINEERING & MANAGEMENT SERV	2	6	0
ENVIRONMENTAL QUALITY & HOUSING	0	3	0
EXECUTIVE,LEGISLATIVE & GENERAL	1	1	0
FABRICATED METAL PRODUCTS	24	36	0
FINANCE,TAXATION & MONETARY POLICY	0	1	0
FOOD AND KINDRED PRODUCTS	27	99	1
FOOD STORES	11	40	0
FORESTRY	0	1	0
FURN. & HOMEFURNISHING STORES	4	6	0
FURNITURE AND FIXTURES	5	1	0
GENERAL BUILDING CONTRACTORS	14	15	0
GENERAL MERCHANDISE STORES	10	59	0



**CASES BY INDUSTRY****FISCAL YEAR 2022**

<b>INDUSTRY</b>	<b>REPORTED CASES</b>	<b>CLOSED CASES</b>	<b>DEATH CASES</b>
HEALTH SERVICES	67	288	0
HEAVY CONSTRUCTION EXCL BUILDINGS	23	53	0
HOLDING & OTHER INVESTMENT OFFICE	1	0	0
HOTELS & OTHER LODGING PLACES	2	9	0
INDUSTRIAL MACHINERY & EQUIP	16	27	0
INSURANCE AGTS, BROKERS & SERV	2	1	0
INSURANCE CARRIERS	2	1	0
JUSTICE,PUBLIC ORDER & SAFETY	8	60	0
LEATHER AND LEATHER PRODUCTS	1	2	0
LEGAL SERVICES	1	2	0
LOCAL & INTERURBAN PASSENGER TRANSP	1	15	0
LUMBER & WOOD PRODUCTS	16	43	1
MEAS ANALYZ & CONTR INSTRUMENTS	1	4	0
MEMBERSHIP ORGANIZATIONS	3	12	0
METAL MINING	1	1	0
MISCELLANEOUS MFG INDUSTRIES	7	11	0
MISCELLANEOUS REPAIR SERVICES	5	4	0
MISCELLANEOUS RETAIL	3	17	0
MOTION PICTURES	1	1	0
NONCLASSIFIABLE ESTABLISHMENTS	4,967	3,401	41
NONMETALLIC MINERALS,EXCEPT FUELS	0	2	0
OIL AND GAS EXTRACTION	3	9	1
PAPER AND ALLIED PRODUCTS	12	29	0
PERSONAL SERVICES	2	7	0
PETROLEUM AND COAL PRODUCTS	2	1	0
PRIMARY METAL INDUSTRIES	9	20	0
PRINTING AND PUBLISHING	4	4	0
REAL ESTATE	6	9	0
RUBBER & MISC. PLASTICS PRODUCTS	14	28	0
SERVICES, NEC	0	1	0
SOCIAL SERVICES	4	19	0
STONE, CLAY & GLASS & CONCRETE PRODU	15	24	0

# CASES BY INDUSTRY

FISCAL YEAR 2022

INDUSTRY	REPORTED CASES	CLOSED CASES	DEATH CASES
TRANSPORTATION BY AIR	0	10	0
TRANSPORTATION EQUIPMENT	9	33	0
TRANSPORTATION SERVICES	0	3	0
TRUCKING & WAREHOUSING	177	276	1
U.S. POSTAL SERVICE	2	0	0
UNKNOWN	5	5	0
WATER TRANSPORTATION	0	1	0
WHOLESALE TRADE-DURABLE GOODS	30	51	0
WHOLESALE TRADE-NONDURABLE GOODS	28	39	0
<b>TOTALS:</b>	5,815	5,454	47

**PART OF BODY INJURED****FISCAL YEAR 2021**

<b>PART OF BODY INJURED</b>	<b>REPORTED CASES</b>	<b>CLOSED CASES</b>
ABDOMEN (INCLUDING GROIN)	120	101
ANKLE	295	239
BRAIN	29	28
BUTTOCKS	11	8
CHEST INC: RIBS,STERNUM,AND SOFT TISS	69	64
DISC (NECK AREA)	4	2
DISC (TRUNK AREA)	6	8
EAR(S)	2	2
ELBOW	80	96
EYE(S)	30	26
FACIAL BONES	13	11
FINGER(S)	285	294
FOOT	221	177
GREAT TOE	23	22
HAND	161	157
HEART	12	17
HIP	67	62
INTERNAL ORGANS	2	4
KNEE	619	587
LARYNX	1	0
LOW BACK AREA INC:LUMBAR & LUMBO-SAC	508	508
LOWER ARM	106	103
LOWER LEG	108	127
LUMBAR AND/OR SACRAL VERTEBRA	17	18
LUNGS	13	17
MOUTH	5	4
MULT SYSTEMS AND MULT BODY SYSTEMS	3,340	3,183
MULTIPLE BODY PARTS INJURY	738	673
MULTIPLE HEAD INJURY	38	45
MULTIPLE LOWER EXTREMITIES INJURY	114	101
MULTIPLE NECK INJURY	5	10

**PART OF BODY INJURED****FISCAL YEAR 2021**

<b>PART OF BODY INJURED</b>	<b>REPORTED CASES</b>	<b>CLOSED CASES</b>
MULTIPLE TRUNK INJURY	15	17
MULTIPLE UPPER EXTREMITIES	125	87
NO PHYSICAL INJURY	9	8
NOSE	9	9
OTHER FACIAL SOFT TISSUE	23	21
PELVIS	8	11
SACRUM AND COCCYX	3	6
SHOULDER(S)	586	527
SKULL	48	39
SOFT TISSUE	38	51
SPINAL CORD	0	1
TEETH	1	0
THIGH	50	44
THUMB	69	66
TOE(S)	16	20
UNDEFINED	0	3
UNKNOWN - INSUFFICIENT INFORMATION	8	15
UNSPEC	2	3
UPPER ARM (INC: CLAVICLE AND SCAPULA)	83	86
UPPER BACK AREA (THORACIC AREA)	37	30
VERTEBRAE	4	2
WRIST	207	197
WRIST(S) & HAND(S)	34	33
<b>TOTALS:</b>	<b>8,417</b>	<b>7,970</b>

**PART OF BODY INJURED****FISCAL YEAR 2022**

<b>PART OF BODY INJURED</b>	<b>REPORTED CASES</b>	<b>CLOSED CASES</b>
ABDOMEN (INCLUDING GROIN)	115	105
ANKLE	321	291
BRAIN	56	33
BUTTOCKS	6	9
CHEST INC: RIBS,STERNUM,AND SOFT TISS	68	65
DISC (NECK AREA)	21	8
DISC (TRUNK AREA)	11	5
EAR(S)	1	5
ELBOW	73	73
EYE(S)	33	33
FACIAL BONES	19	13
FINGER(S)	329	258
FOOT	213	185
GREAT TOE	17	17
HAND	189	165
HEART	15	16
HIP	84	59
INTERNAL ORGANS	4	6
KNEE	635	561
LOW BACK AREA INC:LUMBAR & LUMBO-SAC	441	447
LOWER ARM	115	85
LOWER LEG	155	108
LUMBAR AND/OR SACRAL VERTEBRA	32	13
LUNGS	31	27
MOUTH	4	3
MULT SYSTEMS AND MULT BODY SYSTEMS	797	908
MULTIPLE BODY PARTS INJURY	693	631
MULTIPLE HEAD INJURY	27	30
MULTIPLE LOWER EXTREMITIES INJURY	39	63
MULTIPLE NECK INJURY	5	5
MULTIPLE TRUNK INJURY	14	22

**PART OF BODY INJURED****FISCAL YEAR 2022**

<b>PART OF BODY INJURED</b>	<b>REPORTED CASES</b>	<b>CLOSED CASES</b>
MULTIPLE UPPER EXTREMITIES	55	83
NO PHYSICAL INJURY	20	18
NOSE	13	7
OTHER FACIAL SOFT TISSUE	7	13
PELVIS	10	7
SACRUM AND COCCYX	6	4
SHOULDER(S)	537	524
SKULL	75	53
SOFT TISSUE	18	31
SPINAL CORD	2	2
TEETH	2	0
THIGH	37	35
THUMB	60	64
TOE(S)	22	13
UNDEFINED	4	1
UNKNOWN - INSUFFICIENT INFORMATION	9	8
UNSPEC	0	4
UPPER ARM (INC: CLAVICLE AND SCAPULA)	89	77
UPPER BACK AREA (THORACIC AREA)	55	45
VERTEBRAE	8	5
WRIST	219	194
WRIST(S) & HAND(S)	4	18
<b>TOTALS:</b>	<b>5,815</b>	<b>5,455</b>

## CASES BY EMPLOYER TYPE

7/1/2020 - 6/30/2021

### Cases Reported

<b>Employer Type: Private</b>	
Compensable	4,694
Deaths	52
Totals	4,746
<b>Employer Type: Self Insured</b>	
Compensable	1,599
Deaths	12
Totals	1,611
<b>Employer Type: Self Insured Group</b>	
Compensable	2,046
Deaths	14
Totals	2,060
<b>TOTAL THIS REPORT:</b>	<b>8,417</b>

### Cases Closed

<b>Employer Type Private</b>	
TTD	3,467
TPD	65
PPD	777
PTD	18
Death	63
Second Injury Fund	1
Totals	4,391
<b>Employer Type Public</b>	
TTD	1
PTD	1
Totals	2
<b>Employer Type Self Insured</b>	
TTD	1,305
TPD	9
PPD	209
PTD	7
Death	16
Second Injury Fund	1
Totals	1,547
<b>Employer Type Self Insured Group</b>	
TTD	1,789
TPD	11
PPD	219
PTD	1
Death	10
Totals	2,030
<b>TOTAL THIS REPORT:</b>	<b>7,970</b>

## CASES BY EMPLOYER TYPE

7/1/2021 - 6/30/2022

### Cases Reported

<b>Employer Type: Private</b>	
Compensable	3,903
Deaths	36
Totals	3,939
<b>Employer Type: Self Insured</b>	
Compensable	1,034
Deaths	2
Totals	1,036
<b>Employer Type: Self Insured Group</b>	
Compensable	831
Deaths	9
Totals	840
<b>TOTAL THIS REPORT:</b>	<b>5,815</b>

### Cases Closed

<b>Employer Type Private</b>	
TTD	2,607
TPD	68
PPD	663
PTD	25
Death	53
Second Injury Fund	2
Totals	3,418
<b>Employer Type Public</b>	
TTD	2
Totals	2
<b>Employer Type Self Insured</b>	
TTD	914
TPD	8
PPD	199
PTD	9
Death	7
Totals	1,137
<b>Employer Type Self Insured Group</b>	
TTD	608
TPD	6
PPD	265
PTD	5
Death	14
Totals	898
<b>TOTAL THIS REPORT:</b>	<b>5,455</b>



**FATALITIES BY AGE AND SEX  
FISCAL YEAR 2021**

<b>Age In Years</b>	<b>Female</b>	<b>Male</b>	<b>Unknown</b>	<b>Total</b>
14-19	0	0	0	0
20-29	0	6	0	6
30-39	0	12	0	12
40-49	3	15	0	18
50-59	1	18	0	19
60-69	2	16	0	18
70-79	2	2	0	4
Unknown	0	1	0	1
<b>TOTAL</b>	<b>8</b>	<b>70</b>	<b>0</b>	<b>78</b>
TOTAL FATALITIES FOR FY 2021 - 78				

**FATALITIES BY AGE AND SEX  
FISCAL YEAR 2022**

<b>Age In Years</b>	<b>Female</b>	<b>Male</b>	<b>Unknown</b>	<b>Total</b>
14-19	0	0	0	0
20-29	0	9	0	9
30-39	0	4	0	4
40-49	1	8	0	9
50-59	3	10	0	13
60-69	0	10	0	10
70-79	1	1	0	2
Unknown	0	0	0	0
<b>TOTAL</b>	<b>5</b>	<b>42</b>	<b>0</b>	<b>47</b>
TOTAL FATALITIES FOR FY 2022 - 47				

## EXPENDITURE REPORT - COMPENSABLE CASES

FISCAL YEAR 2021

Expenditure	Private	Self-Ins.	Public	Total
COMPENSATION	\$32,429,142.40	\$13,469,767.11	\$4,036.88	\$45,902,946.39
LUMP SUM	\$370,384.56	\$303,866.44	\$0.00	\$674,251.00
JOINT PETITION	\$17,666,376.06	\$4,049,490.02	\$0.00	\$21,715,866.08
ATTORNEY FEES	\$6,883,626.87	\$2,041,189.69	\$0.00	\$8,924,816.56
OTHER 1	\$2,171,181.91	\$570,578.73	\$0.00	\$2,741,760.64
HOSPITAL	\$14,360,521.21	\$4,970,439.72	\$5,036.33	\$19,335,997.26
MEDICAL	\$39,219,530.44	\$18,482,411.67	\$173,404.46	\$57,875,346.56
MEDICINE	\$2,050,426.88	\$930,508.35	\$299,347.58	\$3,280,282.81
FUNERAL	\$79,788.89	\$66,952.10	\$0.00	\$146,740.99
REHABILITATION	\$2,043,117.77	\$161,263.83	\$222.28	\$2,204,603.88
OTHER 2	\$6,761,186.85	\$1,735,731.25	\$58,815.09	\$8,555,733.19
<b>TOTAL</b>	<b>\$124,035,283.84</b>	<b>\$46,782,198.90</b>	<b>\$540,862.62</b>	<b>\$171,358,345.36</b>

## EXPENDITURE REPORT - COMPENSABLE CASES

FISCAL YEAR 2022

Expenditure	Private	Self-Ins.	Public	Total
COMPENSATION	\$38,350,187.24	\$13,297,140.71		\$51,647,327.95
LUMP SUM	\$142,007.91	\$190,687.39		\$332,695.30
JOINT PETITION	\$34,511,296.20	\$4,358,654.31		\$38,869,950.51
ATTORNEY FEES	\$5,474,162.35	\$1,969,941.90		\$7,444,104.25
OTHER 1	\$1,480,558.83	\$1,140,043.04		\$2,620,601.87
HOSPITAL	\$13,873,385.46	\$4,665,553.66		\$18,538,939.12
MEDICAL	\$36,493,900.18	\$21,626,147.50		\$58,120,047.68
MEDICINE	\$3,387,154.86	\$1,162,306.20		\$4,549,461.06
FUNERAL	\$110,218.57	\$64,172.50		\$174,391.07
REHABILITATION	\$1,780,040.30	\$299,192.54		\$2,079,232.84
OTHER 2	\$6,321,171.06	\$2,032,633.91		\$8,353,804.97
<b>TOTAL</b>	<b>\$141,924,082.96</b>	<b>\$50,806,473.66</b>		<b>\$192,730,556.62</b>

**MEDICAL ONLY EXPENDITURE REPORT**  
**FISCAL YEAR 2021**

<b>Public</b>	<b>Self-Insurer</b>	<b>Private</b>	<b>Total</b>
	<b>\$8,230,171.11</b>		

**MEDICAL ONLY EXPENDITURE REPORT**  
**FISCAL YEAR 2022**

<b>Public</b>	<b>Self-Insurer</b>	<b>Private</b>	<b>Total</b>
	<b>\$8,728,472.62</b>		